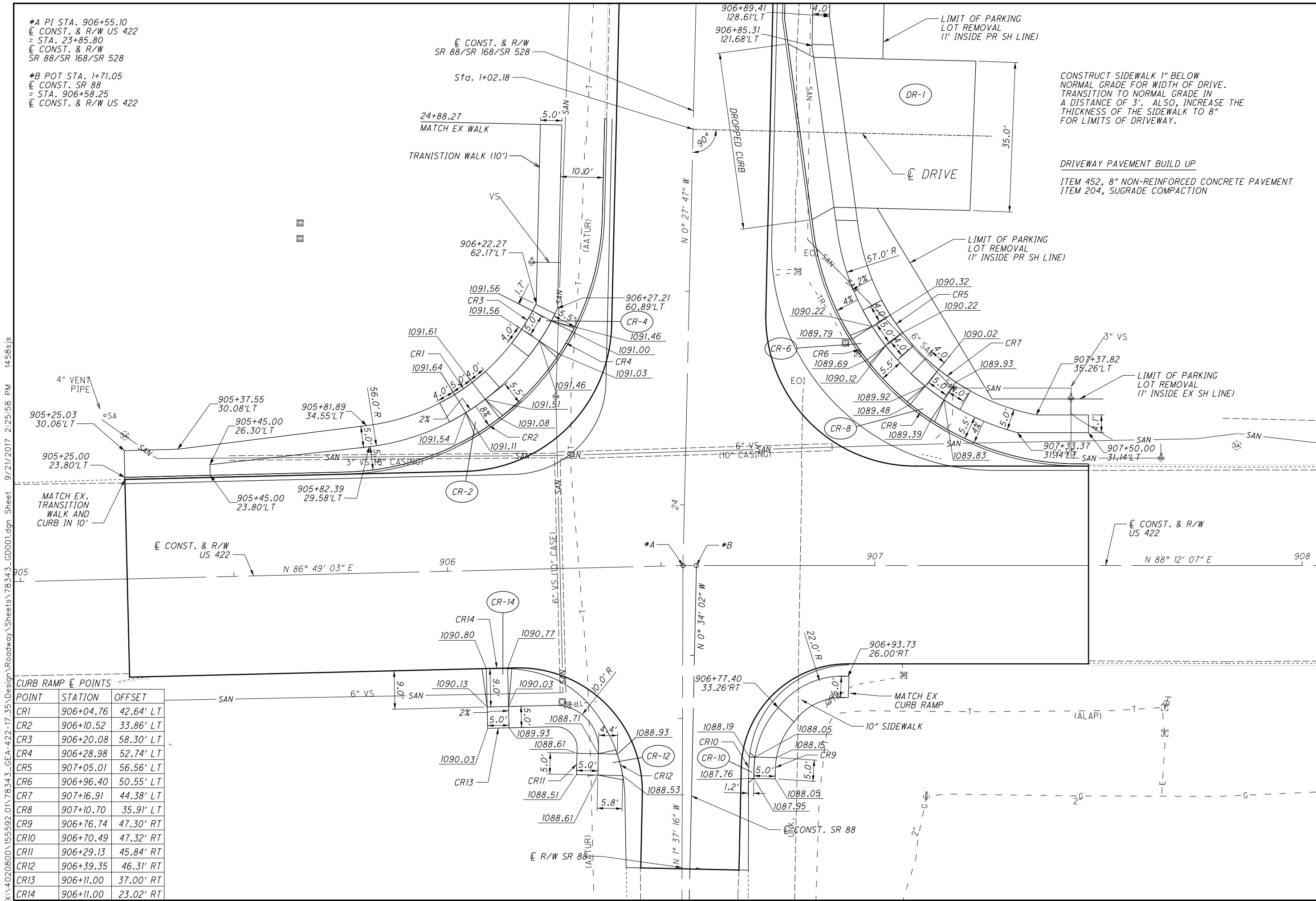


X:\4020800\155592.01\78343_GEA-422-17.35\Design\Roadway\Sheets\78343_GD001.dgn Sheet 9/21/2017 2:25:58 PM 1458sjs

*A PI STA. 906+55.10
@ CONST. & R/W US 422
= STA. 23+85.80
@ CONST. & R/W
SR 88/SR 168/SR 528

*B POT STA. 1+71.05
@ CONST. SR 88
= STA. 906+58.25
@ CONST. & R/W US 422



CURB RAMP @ POINTS		
POINT	STATION	OFFSET
CR1	906+04.76	42.64' LT
CR2	906+10.52	33.86' LT
CR3	906+20.08	58.30' LT
CR4	906+28.98	52.74' LT
CR5	907+05.01	56.56' LT
CR6	906+96.40	50.55' LT
CR7	907+16.91	44.38' LT
CR8	907+10.70	35.91' LT
CR9	906+76.74	47.30' RT
CR10	906+70.49	47.32' RT
CR11	906+29.13	45.84' RT
CR12	906+39.35	46.31' RT
CR13	906+11.00	37.00' RT
CR14	906+11.00	23.02' RT

CONSTRUCT SIDEWALK 1" BELOW
NORMAL GRADE FOR WIDTH OF DRIVE.
TRANSITION TO NORMAL GRADE IN
A DISTANCE OF 3'. ALSO, INCREASE THE
THICKNESS OF THE SIDEWALK TO 8"
FOR LIMITS OF DRIVEWAY.

DRIVEWAY PAVEMENT BUILD UP
ITEM 452, 8" NON-REINFORCED CONCRETE PAVEMENT
ITEM 204, SUGRADE COMPACTION

20

0

5

10

HORIZONTAL
SCALE IN FEET

CALCULATED
ANN
CHECKED
SJS

DRIVEWAY AND SIDEWALK DETAIL
US 422 & SR 88 / SR 528 / SR 168

GEA-422-17.35

27
53